

TRADING POST TIMBERLINE

Shrink Wrap Firewood/Wastewood

Sell Your WOOD at \$300/cord or More!



Double or triple your profits by shrink wrapping wastewood – firewood with WOOD-PAKER! Attractive various size packages can be obtained with our high production, easily operated and affordable machines. Six machines available. The ideal equipment for producing square bundles-palletizable for ease in storage and transporting. Inquire for more details.

Phone: 716-373-5881

FINANCING AVAILABLE

B & B Manufacturing 3007 West River Road • Olean, NY 14760

E-mail: bbmfg@verizon.net • Web: www.TheWoodPaker.com

Schaefer Enterprises

Rely on Our Experience
Est. 1967



www.sewlparts.com
parts@sewlparts.com

★ USED REPAIR PARTS ★

- WHEEL LOADERS •
- CRAWLERS •
- TRACK EXCAVATORS •
- LOADER BACKHOES •
- SKIDDERS •
- SKID-STEER LOADERS •
- ENGINES & TRANSMISSIONS •

800-626-6046

NTPDA

618-833-5498



4535 State Route 3 North
PO Box 136 • Wolf Lake, IL 62998

Timbco/Timberpro Parts Available

- **Final Drives** – Used Lohmann GFT 50, 60, 80s & Older Cat Finals in stock. Drive Motors, Implement Pumps, Valve Parts, Cabs, Funk Drives, Undercarriages, Booms, Cylinders, Swing Motors, Swing Drives and more!
- **John Deere** – E-G GII & GIII 548, 648 & 748 Axles, Transmissions, Engines, Rims, Valve Parts, Cabs Cylinders, Blades and more!

ON SALE THIS MONTH

- Timbco 415C w/Fabtek processor-\$39K
- Newer Quadco 22B 360-\$49K
- Low Hours 2017 Quadco 22C-\$55K
- John Deere Lateral Tilt Hotsaw-\$12K
- Cat 521B Salvage machine- many parts!
- Cat 928G-newer engine-\$35k
- 700 Ecotracks for bogeys-\$3900 and up
- 600 Ecotracks for bogeys-\$3000
- 700 Single wheel eco tracks/50 hrs-\$4500



Call:

614-439-6115
or
740-541-4405

Shipping Available.
Credit Cards Accepted. Our trucks make frequent trips to northern Michigan.

TIMBEREQUIPMENT.COM

INDUSTRY SUPPLIERS

**Search the most complete
online directory in the
industry by keyword,
company name or category.**

SIMONDS

*The PreSharp cutting edge
and squared cutting face
geometry delivers long run
times and square cuts in
Resaws, Scragg Mills and
Portable Sawmill applications.*

Call Toll Free



800-582-0470

SIMONDS PreSharp™

**Narrow Kerf Bandsaw
Blades...Ground
Razor Sharp at
the Factory!**



900 16th Street
Menominee, MI 49858
www.menomineesaw.com

FOR SALE

**Pallets growing mold?
Food grade customers?**

24 ft. ceiling fans work.
Ted • 717-669-1622 • Ameriwind.net

Self Dumping Hoppers!

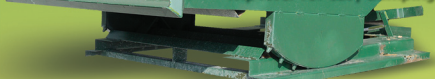
- 4,000 & 6,000 lb. capacity
- Mfg. in Lancaster Co. PA
- Quantity Discounts
- (10) Different Sizes
- Great Shipping Pricing
- Quality at an Affordable Price
- Buy Direct from Manufacturer

AND
SAVE!

Creek Side
Welding
717-355-2008
(Call for free brochure)

Self-dumping Hoppers

- 2 yd. model basic design
- 1/8" steel plate construction
- 54" wide x 65" length
- Forklift channels
- 48" height, depth of 59 1/2"
- Standard sizes 1, 2 & 3 yd.
- 54" reach for stabilization
- Trip-lever for easy dumping



Call Mona Tracy

855-298-8890 or 812-298-8090

sales.universalmachinerysales@gmail.com



www.universalmachinerysales.net

email: info@universalmachinerysales.net

SINGLE NOTCHER

Notches 750 stringers per hour

ACCEPTS

1x4's, 2x4's, 4x8's

NOTCHES

0" to 3" deep with

9" width, standard



BAKER
Products

573.663.7711 800.548.6914 www.bakerproducts.net

PERSONNEL

PSI has been providing quality domestic and export pallet and shipping products to our customers for over 30 years. PSI is also a leader in the pallet recovery, remanufacturing of pallets, and recycling of pallet materials in the Northern California. **We are looking to hire a bilingual working foreman that specializes in building and repairing pallets.** This individual will be training new employees how to efficiently build and repair pallets. We offer full benefits. This position will be paid \$25+/hour depending on experience. **Please send your resume to: liberty@psipallets.com**

SERVICES

Woodview Media

- Website Design
- Online Marketing
- Email Marketing
- Social Media Pages
- Zoom Backgrounds
- Lead Generation

www.woodviewmedia.com
info@woodviewmedia.com

LUMBER FOR SALE

Gang Sawed Pallet Cutstock for Sale

Now Available Pine Cut Stock
Stringers and Deck Boards • Notching Available
Lumber Dipping For Mold Prevention

#2 Pallet Lumber Available

Call Todd or Lisa: 931-296-1455

trichardson@waverlywood.com

Waverly Wood • Waverly, TN

Pine Cut Stock. Notched runners & deck boards. Dipping available for mold control. Will ship long distances.

Stagecoach Milling

Contact: Joe Yoder or Emma Yoder
E24833 Stagecoach Rd. • Fairchild, WI 54741

KD HT HF/DF/SPF

1x4, 1x6, 2x4, 2x6

Any Length Cut-Stock

TJ Forest Inc.

Ph: 800-447-3792

tjforest@gmail.com

**We Specialize in Dense
Hardwood or Poplar:**

- Notched Runners Available
1", 1 1/8", 1 1/4", 1 3/8"

- Pallet Deck Boards

- Specialty Cuts and
Pallet Kits Available

For more information:

Contact Keith Barbo

E-mail: kbarbo@wvsvr.com

Cell (304) 439-0392 • Fax (304) 472-0212

WV Forest Products
Website: www.wvfp.com

PO Box 9, 16 Lumber St. • Buckhannon, WV 26201

SOMERS LUMBER & MFG, INC.

Union Grove, NC

- Hardwood Parts
- SYP Cut Stock
- Panel Cut Stock/CNC
- Band Groove

(704) 539-4751

www.somerslumber.com

PALLETS FOR SALE

42x42 runners, notch + straight
45x45 runners, notch + straight
Various sizes of pallets.

731-642-7566

LUMBER WANTED

Looking to purchase wood
Full Truckloads

80" Long x 3 1/2" Wide x 1/2" Thick
(Actual Size)

Kiln-Dried Pine

Pallet Grade #3 or better

Email KBerwin@yahoo.com or
call Mike Berwin at 314-397-0364

Mars Hill, Inc.

- KD & HT SYP Pallet Parts
- Industrial Grade SYP Lumber
- SYP Blocks
- OSB & Plywood
- 1 x 6 Mixed Hdws
- 1 x 8 Mixed Hdws
- Hardwood Cutstock
- Hdwd & SYP Stakes
- Banding Material

866-629-9089

www.marhillinc.com

mwood@marhillinc.com



website: www.tlbhardwood.com



**T.L.B. FOREST
PRODUCTS INC.**

THE CANADIAN
BIRCH SPECIALIST
READY TO NAIL
PALLET COMPONENTS

Contact: Gaetan #223
tel: 450-492-5130
fax: 450-492-5918
email: info@tlbhardwood.com

- ✓ Deck boards 1/2, 5/8, 3/4, 3/8
- ✓ Stringers 1 1/8, 1 1/4, 1 3/8, notched or solid
- ✓ Long Stock Available
- ✓ Average inventory: 500,000 fbm on the ground for prompt delivery time
- ✓ Best price / quality ratio
- ✓ Direct from our hardwood sawmill
- ✓ Serving satisfied customers since 1987 in areas such as: New England, Eastern and Mid-West U.S. and Eastern Canada

Pallet Cut Stock

- Stringers and Deck Boards
- Fir & Spruce
- H.T. & Green Stock
- Servicing the USA and Mexico
- Chamfering and Notching available
- Quality stock and on time deliveries

Contact our sales team at:

1-604-850-0220, or
info@naforest.com



**North American
FOREST PRODUCTS LTD.**

PALLETS FOR SALE

RUMA'S
PALLET WORLD LLC



HEAT TREATED WHOLESALE PALLETS CASH FOR PALLETS

EUROS 48 X 40 RECYCLING

f @RUMASPALLETWORLD

EMAIL: pallets@rumas.com

PH: 617-389-8093

NAILS

GARNETT COMPANY, LLC

'Pallet Nails for Pallet People Since 1966'

→ LTL SHIPMENTS
DIRECT FROM OUR
WAREHOUSE

→ FULL TRUCKLOADS
CONTAINER OR
FLATBED

→ ON TIME DELIVERY

1-877-427-6245

(1-877-GAR-NAIL)

Fax: 1-417-867-5377

nails@garnettcompany.com

→ EXCELLENT QUALITY

→ HEAT TREATED &
VINYL COATED NAILS
AVAILABLE UPON
REQUEST



!!!CALL TODAY FOR YOUR PALLET NAIL NEEDS!!!

LOGGING EQUIPMENT, INC.

1-800-541-4214

PARTS - SALES - SERVICE

BOONVILLE, NY
315-942-4756
8730 Industrial Drive

LITTLE VALLEY, NY
716-938-9175
5455 NYS Route 353

ALLENWOOD, PA
570-538-2504
17153 US Route 15

FREMONT, NH
COMING SOON!
662 Main St

Tigercat
Tough • Reliable • Productive

ROTOBEC
TOUGH HANDLING EQUIPMENT

TIMBERPRO

QUADCO

KOMATSU
Forestry Quality™

CSI Cutting Systems, Inc.



JP Skidmore LLC

PRO PAC

HOOD

Log Max®

seppi m.

FORESPRO



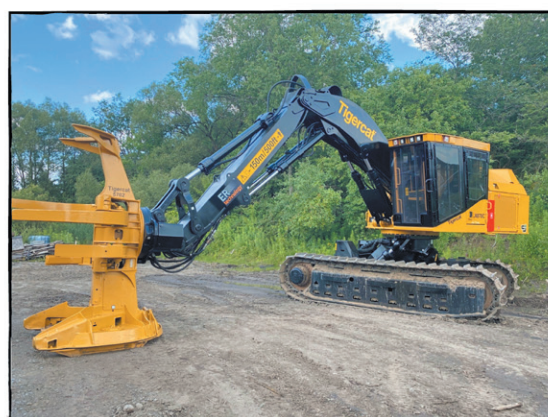
UNIT L3118 - 2021 KOMATSU XF855-2
FORWARDER



UNIT CJTK20 - 2005 PETERBILT 335 TRUCK
WITH MAINTAINER BODY



CONSIGNMENT UNIT - 2004 PITTS
LT45-UL 45' TRI-AXLE LOG TRAILER



UNIT L2787 - 2015 TIGERCAT LX870C
FELLER BUNCHER WITH 7367 HOURS



UNIT L3140 - BARKO 295ML LOADER, MOUNTED
ON A 2001 MAC TRUCK WITH A CTR BAR SAW
SLASHER AND NEW 4642 ROTOBEC GRAPPLE



UNIT L3156 - 2000 CAT IT28G LOADER



UNIT L3073 - 2019 TIGERCAT 602 SKIDDER



UNIT L2453 - 2010 CATERPILLAR 545C



UNIT L3151 - PRENTICE 120 LOADER
MOUNTED ON A 1986 FREIGHTLINER

Serving Forestry Professionals Since 1981

WWW.CJLOGGINGEQUIPMENT.COM